

PRESS RELEASE

info@cbs.gov.il

http://www.cbs.gov.il

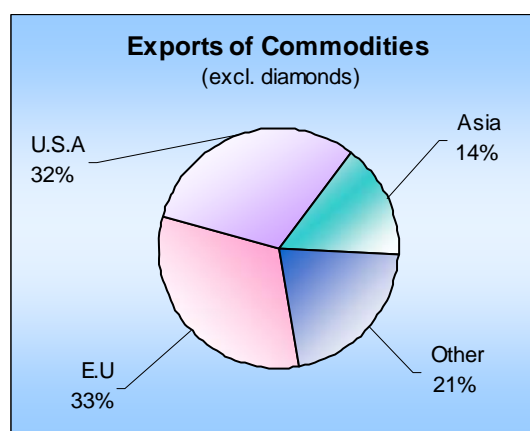
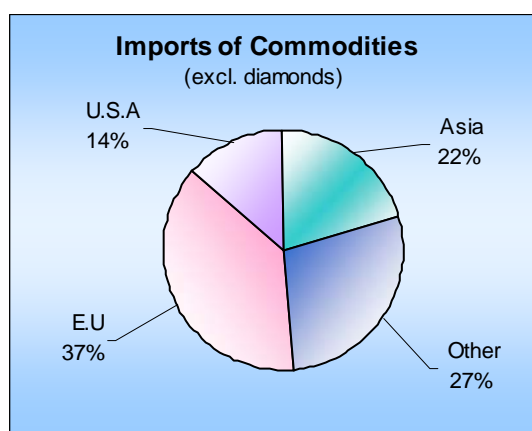
FAX. 02-652 1340

Jerusalem, April 28, 2009
085/2009

Previous Press Release on Foreign Trade appeared on March 18, 2009

Israel's Foreign Trade by Country - March 2009

In March 2009, **import of goods** totaled \$3.8 billion, **exports of goods** totaled \$4.0 billion and the **trade surplus** totaled \$0.2 billion.



The above is based on **temporary data** regarding goods that cleared Customs, not including trade between Israel and the Palestinian Authority.

Main Trading Country Groups (in US million dollars)	Imports		Exports		Trade Balance	
	January-March		January-March		January-March	
	2009	2008	2009	2008	2009	2008
Total	10,584.2	16,447.8	10,454.5	16,074.3	-129.7	-373.5
European Union	3,897.5	5,857.9	3,071.2	4,936.4	-826.3	-921.5
U.S.A.	1,488.5	2,029.7	3,453.1	5,021.9	1,964.6	2,992.2
Asia	2,338.5	3,380.0	1,873.2	3,324.2	-465.3	-55.8
Other Countries	2,859.7	5,180.2	2,057.0	2,791.8	-802.7	-2,388.4

The above is based on **temporary data** regarding goods that cleared Customs, not including trade between Israel and the Palestinian Authority. The data do not include import and export of services that include, among others, software. Data on all exports and imports of goods and services are published as part of the Balance of Payments, every quarter. Imports are valued c.i.f., and exports are valued f.o.b.

Written by Helen Brusilovsky

For explanations and clarifications regarding the contents of this Press Release,
Please contact the Press Relations Unit, at 02-652 7845, 050-623 5124

Development of trade in goods in March 2009, compared with January, was influenced by changes in the value of the U.S.A. Dollar against other currencies in which **import and export** transactions are conducted. Compared to the Euro the U.S.A. Dollar fell by 2.4%, compared to the UK Pound rose by 1.2%, compared to the Swiss Franc fell by 1.0% and compared to the Japanese Yen the U.S.A. Dollar rose by 5.6%.

Trade Balance

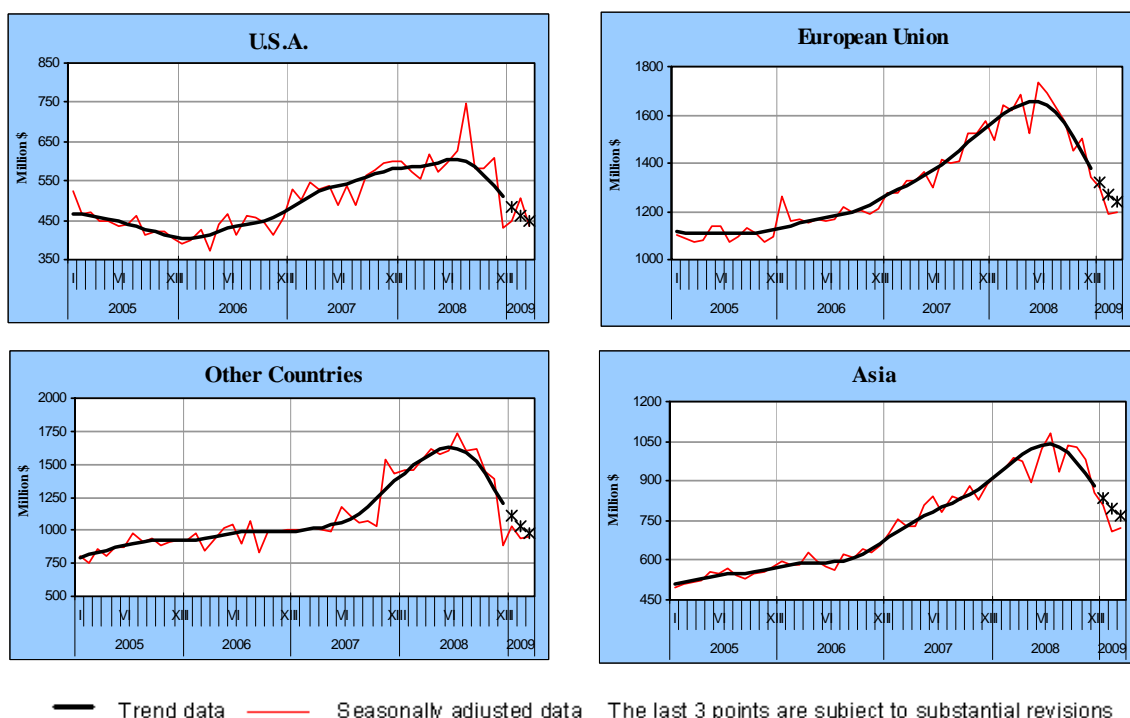
The trade balance (excluding diamonds) shows a deficit of \$1.9 billion in January-March 2009 (\$3.7 billion in the same months of 2008). The trade balance (excluding diamonds) by main country groups shows a surplus of \$1.1 billion with USA, a deficit of \$1.0 billion with EU countries, a deficit of \$1.0 billion with Asian countries and a deficit of \$1.0 billion with Other Countries group.

Imports of goods

Import of goods (excluding diamonds), in current prices in U.S. dollars, totaled \$3.4B in March.

The trend data calculated by the Central Bureau of Statistics, seasonally adjusted for irregular elements, point to drop on **imports of goods** of 35.3%, at an annual rate, during January-March 2009.

Trend data by main country groups indicates that imports from **EU countries** point to a drop of 35.2%, at an annual rate, during January-March 2009. Imports from **USA** point to a drop of 37.9%, imports from **Asia** point to a drop of 40.2% and imports from **Other Countries** point to a drop of 54.7% during the last three months.

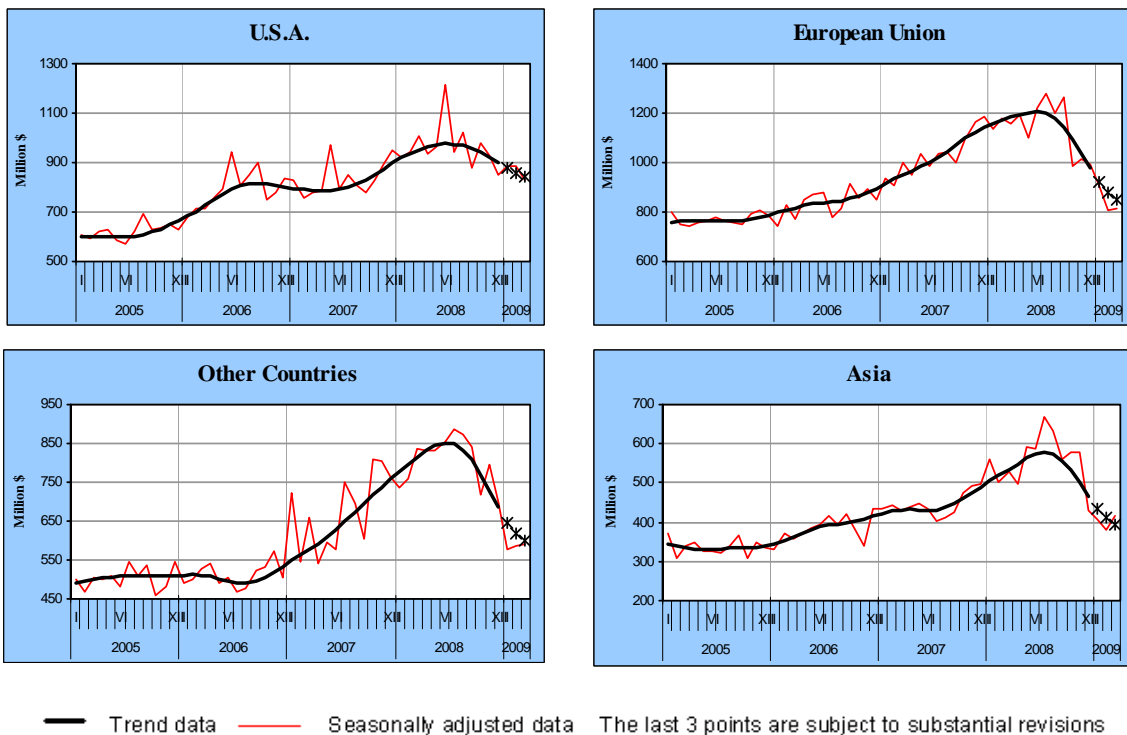


Exports of goods

Export of goods (excluding diamonds), in current prices in U.S. dollars, totaled \$3.0B in March.

The trend data calculated by the Central Bureau of Statistics, seasonally adjusted and adjusted for irregular elements, point to a drop of **export of goods** (excluding diamonds) of 33.4% during January-March 2009 at an annual rate.

Trend data by main country groups indicates that exports to **EU countries** point to a drop of 41.2%, at an annual rate, during January-March 2009. Exports to **USA** point to a drop of 21.2%, exports to **Asia** point to a drop of 47.0% and exports to **Other Countries** group point to a drop of 39.9% during the last three months.



Next Press Release on Israel's Foreign Trade will appear on May 19, 2009.

Related links and publications

Definitions and explanations

http://www.cbs.gov.il/fr_trade/intro_eng.pdf

“Foreign Trade Statistics Monthly”

http://www.cbs.gov.il/reader/fr_trade/ftmenu_e_v1_new.htm

“Israel’s Foreign Trade” – Press Release

http://www.cbs.gov.il/hodaot2009n/16_09_074e.pdf

“Foreign Trade Price Indices” – Press Release

http://www1.cbs.gov.il/www/hodaot2008n/16_08_273e.pdf

“Imports by Country of Origin” – Press Release

http://www1.cbs.gov.il/www/hodaot2008n/16_08_170e.pdf

“Foreign Exchange Rates” – Press Release (Hebrew only)

http://www1.cbs.gov.il/www/hodaot2008n/16_08_001.pdf

“Trade Balance by Technological Intensity” – Press Release

http://www1.cbs.gov.il/hodaot2008n/16_08_141e.pdf

“Exports by Country and Industry, 2007” – Press Release

http://www1.cbs.gov.il/www/hodaot2008n/16_08_204e.pdf

“Foreign Trade of Israel” – Statistilite Series No 41

http://www1.cbs.gov.il/www/statistical/trade_41_e.pdf

“Foreign Trade of Israel- Selected countries 2005” Statistilite Series No 66

http://www1.cbs.gov.il/www/statistical/fttrade2005_e.pdf

“Israel’s Foreign Trade-2006” (Presentation)

http://www1.cbs.gov.il/www/hodaot2007n/16_07_003maz.pdf

Exports, by Commodities and Countries, 1996-2007 (CD only)

Imports, by Commodities and Countries, 2007 (CD only)

Imports, by Commodities and Countries, 2002-2006 (CD only)

Imports, by Commodities and Countries, 1996-2001 (CD only)

DEFINITIONS AND EXPLANATIONS

The Population Investigated

1. Statistical data on foreign trade presented in the publications of the Central Bureau of Statistics and in this Monthly Bulletin relate solely to import and export of commodities. Data on import and export of services and the remaining international business of Israel are included in the Balance of Payments published quarterly in the "Monthly Bulletin of Statistics" and in greater detail in the Current Statistics series.
2. Imports and exports are recorded according to the "Special System"¹, by which only that portion of the trade flowing through customs is included. Accordingly, imports do not include goods imported and stored in bonded warehouses, and exports do not include goods exported from these warehouses. Neither included are goods in transit.
 - a. **Gross imports** include consignments imported from abroad for local use (including finishing and repair) which are freed by the Customs immediately after unloading, or which were freed after a time from the bonded warehouses of the Customs. Import data do not include commodities put into bonded warehouses, except for a number of productive enterprises, which are recognized as bonded warehouses. Imports do not include consignments which were exported in the past and which were returned to Israel without any further processing.
 - b. **Net imports** are obtained by deducting from gross imports the value of goods imported earlier and returned to a supplier abroad without processing or changing its form. As there is no way of identifying the date of entry of the goods to Israel which are being returned abroad, the deduction is done on the date of return abroad. For this reason the returns are deducted from the grand total and not from items detailed by branches.
 - c. **Gross exports** include the flow of products abroad, except consignments of commodities which were previously imported and then returned to a supplier abroad without any processing. It also includes part-finished goods which are sent abroad for additional processing and which eventually will be returned to the sender, and goods which were imported and sold to abroad without processing, when the purchaser is not the supplier.
 - d. **Net exports** are obtained by deducting from the value of gross exports the value of goods, which were previously exported but were returned to the Israeli supplier without processing or change of form. As there is no means of identifying the original date of consignment abroad of exports returned from abroad, the deduction operates on the date of return rather than the date of original export. For this reason returns are deducted from the grand total and not from items detailed by branches (excluding diamonds).
3. The date of statistical registration of the import is the date of the release of the goods by the Customs authorities, whereas for exports it is the date of loading the goods on ship, airplane, or trucks (land transport to Jordan).
4. Foreign trade statistics include, among others, the following goods and business activities:
 - a. Personal import and export: personal effects of immigrants, seamen, returning residents and foreign diplomats (import) and of emigrants (export).
 - b. Parcels dispatched by mail (in recompense or as gifts).
 - c. Ships and aircraft are included in import and export data whether they have passed through Customs or not. Imports include ships purchased from abroad by Israeli companies and sailing under Israeli flag or a foreign flag. It should be noted that ships and aircraft do not undergo the procedure of passing through Customs.

Exports include ships and aircraft, which were produced in Israel and those, which were previously purchased and later resold abroad in the reporting period.

¹ United Nations, *International Trade Statistics Concepts and Definitions*, Statistical Papers, Series M, No. 52/ Rev. 2, 1998.

- d. Products for exhibitions and fairs are, in principle, included in foreign trade data only if they were sold or given away free of charge. Returns from exhibitions are not included in foreign trade but there are difficulties in identifying these flows.
- e. Equipment imported or exported on a lease basis (e.g., electronic computers and other data processing equipment).
- f. Gold and silver (non-monetary), both in processed or partly processed form, scrap and remnants intended for industry, smelting or medical use.
- g. Fuel and food supplied to foreign ships and aircraft in Israeli ports are included in export since 1969, even though they did not pass through Customs.

5. Special transactions and commodities not included in foreign trade statistics:

- a. Commodities imported or exported for a limited period of time and returned without having undergone any processing, e.g. personal effects of tourists (including cars); goods intended for exhibitions, fairs, displays, etc.; commodities intended for temporary storage only; equipment sent to perform contract work and returned after use.
- b. Effects purchased by tourists in Israel or by Israelis abroad. An estimate of the value of these purchases is included in the account of services in the Balance of Payments. In cases where duty has been charged on goods purchased by Israeli tourists, the goods were included in total imports.
- c. Engines and parts of aircraft sent by local airlines to their branches or representatives abroad for replacement or repairs and those sent to Israel from branches abroad for repairs or replacement.
- d. Fish caught by Israeli fishing vessels.
- e. Monetary gold, securities and legal tender (notes and coins) or currency about to be made legal tender (local currency notes printed abroad are recorded according to the value of the printers and not according to face value).
- f. Fuel and food supplied to Israeli ships and aircraft in foreign ports (recorded in Balance of Payments as services).
- g. Ballast and dunnage supplied to foreign ships in Israeli ports and to Israeli ships in foreign ports.
- h. Imported military equipment and weapons (estimated value is included in the commodities account in the Balance of Payments). The flow is not included in the import of goods because it does not undergo the usual procedure of passing through customs.

6. The trade with the Palestinian Authority

The trade data do not include the transactions with residents of the Palestinian Authority. The data also do not include the value of the import and export commodities, which were released by the Israeli customs and belong to residents of the Palestinian Authority. Data on trade with Palestinian Authority is published within the Balance of Payment.

Classification of Commodities

1. The classification, according to which foreign trade statistics are processed and published, is the classification that serves the customs² in handling the import and export shipments. Import data are classified according to the details in the customs tariff³ and export data - according to the "Classification of Export Commodities"⁴.

² <http://www.mof.gov.il/customs/taarif.htm>

³ *Customs Tariff and Exemption Ordinance for 2002*, edited according to H.S. - 2002, Kovetz Hatakanot No. 1295, 1 January 2002.

⁴ The Ministry of Industry and Trade, The Customs Authority *Classification of Export Commodities Edited* according to H.S.-1988, *Customs and Excise Dept.*, No. 511, 1 January 1988, updated for 1992.

As of January 1st 1988, the customs' classification of commodities, which serves the customs and statistical data processing, was based on a new international nomenclature, which was prepared by the Customs Cooperation Council – “The Harmonized Commodity and Coding System” (H.S.)⁵. This nomenclature replaces the Nomenclature “Classification of Goods in Customs Tariff” of which the first version was introduced at 1962 named “Brussels’ Tariff Nomenclature” (B.T.N.) and the last version was the C.C.C.N. – “Customs Cooperation Council Nomenclature”. In the special Supplement to Quarterly No. 4, 1988, details are presented on the new nomenclature, its aims, structure, and its principles of classification.

2. **S.I.T.C.**⁶

Import and export data are also classified according to the U.N.⁷ Standard International Trade Classification, in which goods are classified in groups that are better suited for statistical presentation. This classification is obtained by a special sorting of details in the customs classification and their concentration in groups according to the structure of the classification. More details on the S.I.T.C. and its last version are presented in the Supplement to the Foreign Trade Quarterly No. 1, 1988.

3. **Classification by Economic Branches**

Export data is presented by branch of origin, meaning: the classification was done by the economic branch to which the product pertains by character. The division of the products into branches was done based on the description of the goods in the goods classification and not based on the exporter’s branch. The definition of the branches is based on the classification of economic branches prepared by the Central Bureau of Statistics.

Starting with Quarterly No.1, 1995, data are published on export goods classified by new branch (origin)⁸. Until this Quarterly export goods were classified according to the "Standard Industrial Classification of All Economic Branches 1970" (Technical Publication No. 46).

Starting with Monthly No.8, 2003, data on export goods are published classified by new branch (origin)⁹.

Export data classified by new branch can be obtained from the Bureau's database starting 1988.

4. **Classification by Economic destination.**

This classification, according to which data on imports are presented, divides the items by three uses: consumer goods, raw materials for production and investment goods. Each use is sub-divided into secondary groups. In certain cases when a product is intended for more than one use, this product’s import value is divided into the appropriate uses (e.g. passenger cars are both consumer goods and investment goods; sugar functions as consumer goods as well as a raw material).

In this classification the division of imports is into primary uses of the goods, i.e. the first use made of them: consumption, as raw materials - for production, or investment. Unprocessed and partly processed goods and components for assembling machinery and automobiles are classified as “raw materials”. Spare parts, tools and accessories for additional use are also included under “raw materials”. The classification by economic use is based on "Survey of Import Destination" which is conducted once in several years by the Central Bureau of Statistics.

⁵ http://europa.eu.int/comm/eurostat/ramon/nomenclatures/index.cfm?TargetUrl=LST_NOM

⁶ United Nations, *Standard International Trade Classification, Revision III*, Statistical Papers, Series M, No. 34, New York 1986.

⁷ <http://unstats.un.org/unsd/cr/registry/regcst.asp?Cl=14>

⁸ Central Bureau of Statistics, *The Standard Classification of All Economic Activities 1993*, Technical Publication No.63, Jerusalem 1993.

⁹ Central Bureau of Statistics, *The Standard Classification of All Economic Activities 1993*, Technical Publication No. 63, Second Edition, Jerusalem 2003.

The Classification of Import Commodities, by economic destination was updated in the No.3, 1993 Quarterly, as based on the Import Destinations Survey 1988. The results of that survey were published in Special Publication No. 952¹⁰. Until the said quarterly, commodities were classified according to the 1982/83 survey, and henceforward they are classified according to the 1988 survey. The results of that survey were published in Special Publication No. 787¹¹.

5. Countries

- a. The country of import might be, "the country of purchase", "the country of origin" or "the country of dispatch". "The country of purchase" is defined as the country from which the invoice for the goods imported was sent; "the country of origin" is defined as the manufacturing country of the goods; "the country of dispatch" is defined as the country in which the goods were loaded on ship, airplane, or trucks. In some cases, "the country of purchase" is different from "the country of origin" and from "the country of dispatch".
- b. The country of export (destination) is defined as "the country of sale", i.e. the country of the purchaser. In fact the country of export is recorded as the country to which the invoice for the goods exported was sent. In certain cases "the country of export" is different from the country of consumption and the country of shipment.
- c. As from the agricultural export season of 1991/92 with the dissolution of the Board of Citrus Marketing and transfer of export to other companies, most shipments of this export arrive to Belgium, and are bought by various agents. As a result, there is no information on the country of the (final) destination of the commodity. Also the sale of flowers through the flower exchange is recorded as exports to Netherlands without no possibility to classify by country of final destination.
- d. Data on the import and export of commodities are published according to countries, blocs, regions and continents. The countries within the group are arranged alphabetically according to the Hebrew name of the country within the group.
- e. List of changes introduced to countries and blocs:
 - Through accession of the German Republic to the Federal Republic of Germany with effect from 3 November 1990, the two German States have united to form one sovereign state. As from that date all data shown referring to the Federal Republic of Germany are under the designation of "Germany".¹²
 - In 1991 the Union of Soviet Socialist Republic formally dissolved into 15 independent countries: Ukraine, Azerbaijan, Estonia, Armenia, Belarus, Georgia, Russian Federation, Latvia, Lithuania, Moldova Republic, Uzbekistan, Tajikistan, Turkmenistan, Kazakhstan and Kyrgyzstan. From June 1st 1992 onward data are shown for the individual countries.¹³
 - Beginning September 1st 1992 the former Yugoslavia data is referred to the new sovereign countries: Bosnia and Herzegovina, Croatia, Slovenia, the Federal Republic of Yugoslavia and Yugoslavia republic of Macedonia.¹⁴
 - On June 4, 2003, the official name of the Federal Republic of Yugoslavia has been changed to Serbia and Montenegro.
 - As of January 1st 1994 Czech Republic data is referred separately to Czech Republic and Slovakia.
 - From June 2004, the following countries joined the European Union: Estonia, Hungary, Latvia, Lithuania, Malta, Slovenia, Slovakia, Poland, Czech Republic and Cyprus.¹⁵

¹⁰ Central Bureau of Statistics, Import Destination Survey 1988, Special Series No. 952.

¹¹ Central Bureau of Statistics, Import Destination Survey 1982/83, Special Series No. 787.

¹² Central Bureau of Statistics, 'Foreign Trade Statistics Quarterly' No. 1, 1991, Vol. 42

¹³ Central Bureau of Statistics, 'Foreign Trade Statistics Quarterly' No. 2, 1992, Vol. 43

¹⁴ Central Bureau of Statistics, 'Foreign Trade Statistics Quarterly' No. 4, 1992, Vol. 43

¹⁵ Central Bureau of Statistics, 'Israel's Foreign Trade by Country - May 2004', Press Release 152/2004, June 17, 2004

- Trade data concerning Luxemburg and Belgium are published separately for each country. Exceptionally, are two tables, in which until 1994 data of both countries were published jointly: (a) Table 13 – “Exports, Imports and Trade Balance, by Country, of Purchase and Destination”; (b) Table 14 – “ Main Trading Countries, by Commodity Groups”.

Also in table 12, “Exports to Main Trading Partners, by Commodity Groups”, joint data was published for both countries. But since 4th quarter 1994 its publication stopped.

The Value of Commodities

- The value of imports** is determined by the importers' report to Customs being based on the value of the transaction as defined in the Treaty of Brussels on the Evaluation of Goods for Customs Purposes (1950). The value of the transaction represents the value for which the goods were sold supplemented by expenditure on transportation and insurance as far as the border of the importing country, including costs of unloading at the exporting port. This definition of the value of the transaction in imports corresponds to the value of the goods according to C.I.F. (Cost, Insurance, Freight).

In most of the cases, the value for Customs purposes includes an imputation of local costs - wharfage and portage fees.

Import taxes and other taxes levied on imported goods are not included in the value for Customs purposes.

In the event of import of products unaccompanied by monetary recompense, where difficulty exists in determining the value of the transaction (as in the case of gifts), the value is determined by an estimate based on market price. So, for example, the cost of import of gifts for museums is based on the valuation of an insurance assessor.

If imported commodities are freed against a deposit, the import is recorded according to the date of release against the deposit until the final settlement of the account. The amendment of this import is recorded with final settlement, which is also dated according to the actual release of the goods (in other words an amendment of the value of the import may take place after several months).

- Import** data are recorded in the import entry forms in the currency of the transaction and are calculated in Israeli Shekels, according to the exchange rate on the date they are freed by customs and are converted into U.S. dollars too. The exchange rates for these purposes are the exchange rates for customs purposes on the date of the presentation of the entry forms. In the publications on Foreign Trade, the values of imports and exports are presented in U.S. dollars.

Since the floating of the Israeli Pound in November 1977, the rates of exchange between major foreign currencies and the Pound or the Shekel are determined for customs according to the rate dictated by the customs authorities on the basis of data provided by the Bank of Israel. To the extent that exchange rates fluctuate more than 2 percent in the daily rate of any currency, as fixed by the Bank of Israel, so the rates for customs purposes may be changed even in the middle of the week

December 1980 and September 1985 changes were introduced concerning Israeli currency: December 1980 the prevailing currency, the Lira, was changed to shekel. The exchange rate was 10 Lira was equivalent to 1 Shekel. September 1985 the Shekel was changed into New Shekel. The exchange rate was 1,000 Shekels were equivalent to 1 New Shekel.

- The Value of exports** data are recorded according to F.O.B. (free on board) transaction values before discounts and commissions are paid to foreign factors.
- Export** data are recorded in the export entry forms in Israeli Shekels and in the currency in which the transaction is made. The conversion into U.S. dollars is carried out in the monthly summaries, according to the rate on the day the transaction was registered at customs.

Data Sources

The main sources for imports and exports data are the forms submitted to the customs authorities by importers and exporters (import and export entry forms).

Seasonally Adjusted Data

Several data series are presented Seasonally Adjusted.

Beginning January, 2005 the data analysis is done by means of the improved computer program X12-ARIMA/2000, replacing X12-ARIMA/2000 used before. This analysis is based on moving averages, which calculates the seasonal factors-S for each month. These factors may change by use of supplemented or updated data.

The seasonally adjusted data are estimated using the X-12-ARIMA seasonal adjustment method that was developed by the US Census Bureau and by a procedure developed in the Central Bureau of Statistics (CBS) for the simultaneous estimation of the moving festival dates and the number of trading days effects in Israel¹⁶.

The seasonally adjusted data are calculated by adjusting the original data for the influence of seasonality and festival and trading day effects. Trend data are estimated by removing the irregular influences (noise) from the seasonally adjusted data.

The seasonally adjusted data and the trend are subject to revisions as they are calculated anew, each month or quarter, on the basis of original data that include an additional observation (concurrent seasonal adjustment).

Starting 'Foreign Trade Quarterly' No. 1, 1995, 8 new export series and 5 additional import series are published. Monthly data for 1988 and onward can be obtained from the Bureau's database for each basic series and for series totals.

¹⁶ A detailed and updated explanation on the seasonal adjustment procedure and trend estimation is given in the publication "Seasonal and prior adjustment factors for 2007, trends for 2003-2007"(internet only, at the C.B.S.: "Classification and methods, statistical methods, [time series](http://www.cbs.gov.il/publications/tseries/seasonal08/presentationh08pdf)"): <http://www.cbs.gov.il/publications/tseries/seasonal08/presentationh08pdf>

Table D 1. - Trade Countries -Imports and Exports

לוח ד 1. - ארצות הסחר - יבוא ויצוא

Million \$		מיליוני דולרים												
סמל	Code	Imports				Exports				ארצות		סמל		
	Countries	III		I - III		I - III		I - III		I - III				
		2009	2008	2009	2008	2009	2008	2009	2008	2009	2008			
	Grand Total	3797.3	6066.4	10584.2	16447.8	65173.2	56623.0	4045.5	5846.4	10454.5	16074.3	61322.3	54092.0	סך כולל
	Europe	1894.9	2707.0	5076.6	7534.7	29661.2	26832.3	1531.6	2345.8	3909.0	6115.5	21896.3	19192.6	יבוא
	European Union	1448.0	2076.6	3897.5	5857.9	22513.4	20687.0	1115.4	1720.5	3071.2	4936.4	17794.4	15992.8	יבוא
105	Austria	19.6	26.2	53.4	78.7	399.2	297.1	9.1	13.1	21.2	28.2	99.9	118.5	יבוא
005	Italy	207.3	268.0	508.8	670.4	2553.7	2302.1	97.8	161.7	272.8	468.6	1668.8	1284.4	יבוא
007	Ireland	25.9	28.0	111.0	109.5	415.1	368.1	8.3	8.4	25.4	23.0	99.9	118.9	יבוא
224	Estonia	0.1	0.2	0.3	0.8	4.1	3.6	0.5	1.5	1.9	3.8	13.7	16.6	יבוא
215	Bulgaria	4.2	4.4	10.2	11.0	52.0	63.8	4.0	7.2	11.8	17.8	56.2	54.3	יבוא
010	Belgium	200.6	425.7	523.4	1224.0	4250.3	4454.9	216.5	407.4	612.5	1389.5	4618.7	4070.8	יבוא
015	Germany	250.5	385.9	701.0	1022.0	3940.5	3484.3	127.8	200.5	361.8	525.6	1950.6	1913.0	יבוא
017	Denmark	14.8	18.1	46.4	53.5	215.4	185.6	26.6	15.3	43.5	35.4	167.0	108.4	יבוא
020	Netherlands	154.9	206.9	462.5	639.2	2465.3	2090.3	151.6	204.4	415.1	574.5	2035.0	1609.3	יבוא
235	Hungary	20.3	29.7	52.8	64.3	288.8	195.6	13.8	11.3	44.7	35.8	174.5	116.3	יבוא
023	United Kingdom	169.4	215.6	371.7	621.8	2519.9	2681.4	116.8	216.6	347.3	565.4	1892.7	1938.1	יבוא
245	Greece	21.2	21.0	61.8	63.1	221.4	284.5	29.7	22.4	81.3	70.8	300.9	290.9	יבוא
025	Luxembourg	10.4	13.7	26.3	41.0	174.0	91.9	0.8	2.2	2.1	4.6	20.4	15.3	יבוא
233	Latvia	1.1	15.3	44.2	86.5	319.4	258.8	2.2	3.1	6.7	8.0	33.9	32.5	יבוא
234	Lithuania	0.5	1.2	2.5	3.4	24.5	21.8	1.4	5.5	5.0	14.0	42.4	26.2	יבוא
255	Malta	2.1	1.3	6.8	2.0	35.4	26.0	0.4	0.7	1.1	1.4	50.8	90.8	יבוא
244	Slovenia	6.5	7.1	14.6	18.2	65.4	97.1	13.8	13.1	39.3	30.4	125.1	100.3	יבוא
272	Slovakia	5.5	6.0	13.1	10.7	49.4	17.2	1.7	2.8	4.4	5.6	28.5	18.5	יבוא
260	Spain	76.6	87.7	200.8	238.0	959.1	811.9	81.1	97.4	186.0	283.8	1107.9	1106.0	יבוא
265	Poland	14.1	13.9	42.3	36.4	152.8	127.7	16.5	22.1	52.5	59.1	287.2	237.1	יבוא
125	Portugal	9.7	11.8	23.4	41.9	114.2	126.2	9.8	8.9	23.7	31.2	98.9	90.9	יבוא
130	Finland	29.2	19.6	72.0	82.8	370.2	339.5	8.2	20.6	28.1	45.9	169.0	155.3	יבוא
271	Czech Republic	13.6	16.2	29.8	42.4	165.6	136.4	9.1	14.2	36.1	40.4	161.5	132.6	יבוא
030	France	132.5	171.1	362.1	451.9	1889.2	1480.9	106.9	135.9	274.6	357.6	1298.0	1313.2	יבוא
378	Cyprus	4.1	8.9	11.9	33.9	68.7	65.1	33.3	88.0	102.3	216.3	880.4	623.1	יבוא
275	Romania	10.1	11.1	23.1	26.8	106.2	119.2	16.4	20.4	37.2	58.8	230.6	240.0	יבוא
135	Sweden	43.2	62.0	121.3	183.7	693.6	556.0	11.3	15.8	32.8	40.9	181.9	171.5	יבוא
	European Free Trade Association (E.F.T.A.)	277.3	277.8	747.4	857.7	4043.7	2960.6	221.0	356.5	343.4	511.1	1289.4	1104.7	יבוא
107	Iceland	0.9	1.6	2.2	3.1	17.7	13.3	0.6	0.4	0.8	1.1	3.5	4.9	יבוא
120	Norway	4.3	4.9	11.9	14.0	52.4	65.0	6.3	10.6	18.1	23.7	75.5	63.7	יבוא
140	Switzerland	272.1	271.3	733.3	840.6	3973.6	2882.3	214.1	345.5	324.5	486.3	1210.4	1036.1	יבוא
	Other European Countries	169.6	352.6	431.7	819.1	3104.1	3184.7	195.2	268.8	494.4	668.0	2812.5	2095.1	יבוא
222	Ukraine	8.5	31.2	20.1	53.2	201.5	154.8	7.0	23.8	17.8	52.0	195.1	161.9	יבוא
241	Bosnia and Herzegovina	0.1	0.1	0.1	0.2	1.5	2.1	0.1	0.4	0.7	0.7	4.2	1.6	יבוא
227	Belarus	0.3	0.2	0.6	0.8	5.6	5.2	1.8	3.2	4.1	5.9	22.6	14.4	יבוא
230	Gibraltar	0.4	0.9	0.9	1.8	2.7	1.1	0.0	0.1	0.0	0.3	35.2	25.3	יבוא
324	Turkey	130.5	202.0	345.5	497.3	1825.3	1606.9	111.0	155.2	266.7	374.6	1609.9	1195.8	יבוא
246	Yugoslavia	0.0	0.6	0.5	1.3	10.3	11.2	0.1	3.0	2.5	5.8	57.9	20.8	יבוא
236	Moldova Republic	0.1	0.1	0.3	0.9	2.2	1.1	0.6	0.6	3.1	1.3	25.8	10.3	יבוא
243	Macedonia	0.0	0.0	0.2	0.0	0.8	0.4	4.6	1.2	7.3	1.8	20.8	5.9	יבוא
242	Croatia	0.3	0.3	0.7	0.6	5.9	3.1	2.7	2.3	6.6	5.6	23.2	27.8	יבוא
229	Russian Federation	29.3	117.2	61.8	262.1	1047.1	1398.8	61.4	77.0	169.3	211.8	777.0	611.5	יבוא
299	Other Countries	0.1	0.0	1.0	0.9	1.2	0.0	5.9	2.0	16.3	8.2	40.8	19.8	יבוא
	Asia	797.3	1125.1	2338.5	3380.0	13712.8	11908.8	778.2	1021.0	1873.2	3324.2	12165.5	9771.3	יבוא
221	Uzbekistan	0.2	0.2	0.2	0.6	2.7	2.0	0.6	3.0	1.4	6.3	23.3	25.6	יבוא
223	Azerbaijan	0.0	0.0	0.1	0.1	0.3	0.2	19.9	6.6	41.6	35.0	129.4	82.6	יבוא
303	Indonesia	7.0	9.3	21.1	47.3	293.4	89.3	0.8	1.1	1.8	3.9	15.8	17.6	יבוא
226	Armenia	0.0	0.0	0.0	0.8	1.6	14.8	0.2	1.4	0.4	1.9	27.1	34.6	יבוא
228	Georgia	0.1	0.1	0.5	0.4	2.0	2.3	3.9	10.9	12.6	33.6	132.0	54.1	יבוא
315	India	99.0	154.9	232.8	427.2	1648.8	1689.6	164.5	166.8	335.8	508.2	2361.3	1613.7	יבוא
318	Hong Kong	100.1	146.7	261.2	425.5	1813.7	1747.5	285.1	304.6	659.6	1380.3	4140.8	3118.4	יבוא
321	Vietnam	6.3	6.5	18.8	50.3	140.0	64.2	9.0	2.2	14.1	30.8	79.4	70.9	יבוא
232	Turkmenistan	0.0	0.0	0.0	0.0	0.2	0.8	0.0	0.6	0.0	0.9	1.7	2.2	יבוא
363	Taiwan	48.0	62.6	126.9	176.5	712.4	708.7	20.6	54.1	74.7	118.5	473.0	563.0	יבוא
327	Japan	137.0	200.3	371.2	640.7	2226.7	1882.1	51.0	73.6	145.3	195.4	883.0	769.6	יבוא
328	Jordan	3.8	9.0	9.7	19.5	105.9	54.4	22.7	31.6	71.5	102.5	288.5	250.7	יבוא
312	Myanmar	0.0	0.2	0.0	0.2	0.6	0.8	0.3	0.0	1.8	0.5	1.3	1.3	יבוא
336	Malaysia	8.2	7.4	20.3	23.4	100.6	63.6	2.3	2.3	3.2	12.5	30.2	70.4	יבוא
345	China	229.2	302.1	847.7	958.6	4244.0	3476.9	68.2	121.9	161.1	261.2	1293.5	1040.6	יבוא
350	Singapore	45.4	54.2	104.4	139.4	552.5	558.4	29.3	47.2	81.2	124.9	519.8	416.3	יבוא
369	Sri Lanka	2.9	4.6	5.2	11.6	47.9	37.6	3.2	10.1	10.9	19.3	72.8	60.7	יבוא
360	Philippines	5.5	7.8	18.6	20.2	86.8	85.0	5.9	15.3	20.5	38.3	151.1	204.2	יבוא
372	South Korea	74.0	93.2	206.8	284.0	1103.2	945.4	62.5	108.5	155.9	268.5	818.5	746.1	יבוא
237	Kazakhstan	0.0	2.6	0.0	2.7	3.4	3.3	2.0	3.1	8.2	11.0	158.5	99.6	יבוא
387	Thailand	29.2	62.4	86.4	146.6	557.3	463.8	17.3	53.1	55.3	156.9	494.8	458.0	יבוא
399	Other Countries	1.4	1.0	6.6	4.4	68.8	18.1	8.9	3.0	16.3	13.8	69.7	71.1	יבוא
	Africa	30.5	78.0	146.1	172.3	733.6	336.3	75.6	115.0	238.0	326.5	1467.7	1202.0	יבוא
401	Uganda	1.9	0.4	2.6	1.6	7.2	7.6	1.3	2.2	2.5	3.6	11.6	11.1	יבוא
410	Ethiopia	4.3	5.2	10.3	16.0	46.2	26.3	0.4	1.7	2.3	4.6	18.4	12.1	יבוא
412	Botswana	0.0	0.0	0.0	0.0	0.0	0.0	1.8	11.7	15.4	29.3	79.9	39.6	יבוא
416	Gabon	0.0	0.0	0.0	0.0	0.0	0.2	0.1	0.1	0.6	0.3	2.9	1.1	

Table D 1. - Trade Countries -Imports and Exports

לוח ד 1. - ארצות הסחר - יבוא ויצוא

Million \$													מיליוני דולרים				
סמל	Countries	Imports						Exports						ארצות	סמל		
Code		III		I - III		I - III		III		I - III		I - III				ארצות	Code
		2009	2008	2009	2008	2008	2007	2009	2008	2009	2008	2008	2007				
	America	586.3	913.1	1726.5	2509.8	9745.7	9504.2	1467.3	2119.7	3897.0	5725.3	23192.4	21267.0	יבוא	אמריקה הצפונית	יבוא	
	North America	532.5	751.5	1606.3	2156.4	8659.6	8340.5	1367.6	1947.1	3667.6	5302.7	21203.5	19910.9	יבוא	ארצות הברית	יבוא	505
505	USA	480.2	699.3	1488.5	2029.7	8034.4	7848.9	1284.8	1845.1	3453.1	5021.9	19972.5	18906.8	יבוא	מקסיקו	יבוא	723
723	Mexico	17.2	15.5	37.0	31.1	115.8	57.9	25.4	27.1	68.4	73.0	329.3	289.8	יבוא	קנדה	יבוא	510
510	Canada	35.1	36.7	80.8	95.6	509.4	433.7	57.4	74.9	146.1	207.8	901.7	714.3	יבוא	ארצות הברית	יבוא	505
	Central America	5.8	3.5	11.0	9.0	48.6	34.4	12.3	20.4	40.4	56.9	236.6	181.6	יבוא	ארצות הברית	יבוא	505
611	El Salvador	0.0	0.0	0.0	0.0	0.3	0.5	0.1	0.3	0.3	3.1	12.7	8.3	יבוא	ארצות הברית	יבוא	505
631	Bahamas	0.0	0.0	0.0	0.0	0.0	0.2	0.0	0.0	0.0	0.1	0.4	0.5	יבוא	ארצות הברית	יבוא	505
621	Barbados	0.0	0.0	0.0	0.0	0.0	0.0	0.0	0.2	0.0	0.8	1.7	3.6	יבוא	ארצות הברית	יבוא	505
625	Jamaica	0.0	0.0	0.0	0.0	0.0	0.1	0.3	1.4	0.8	2.7	14.4	12.6	יבוא	ארצות הברית	יבוא	505
613	Guatemala	0.2	0.1	1.6	0.3	2.7	3.4	2.2	2.6	4.7	7.4	31.3	26.5	יבוא	ארצות הברית	יבוא	505
636	Haiti	0.0	0.0	0.0	0.0	0.0	0.0	0.1	0.3	0.5	1.4	3.7	5.9	יבוא	ארצות הברית	יבוא	505
615	Honduras	0.1	0.1	0.1	0.1	0.7	0.5	0.7	2.1	1.4	5.0	29.8	12.4	יבוא	ארצות הברית	יבוא	505
627	Trinidad and Tabago	0.0	0.0	0.0	0.0	0.0	0.0	0.3	0.1	1.2	0.1	2.4	3.8	יבוא	ארצות הברית	יבוא	505
650	Martinique	0.0	0.0	0.0	0.0	0.0	0.0	0.2	0.2	0.5	0.4	1.9	1.1	יבוא	ארצות הברית	יבוא	505
617	Nicaragua	0.0	0.0	0.1	0.0	0.0	0.0	0.4	1.4	0.6	2.1	5.3	4.8	יבוא	ארצות הברית	יבוא	505
641	Panama	2.5	1.7	5.1	5.8	32.6	9.8	2.5	0.7	4.1	3.1	16.9	18.1	יבוא	ארצות הברית	יבוא	505
619	Costa Rica	0.7	0.2	1.0	0.5	2.0	2.4	2.9	3.0	6.6	10.6	43.0	35.3	יבוא	ארצות הברית	יבוא	505
639	Dominican Republic	0.1	0.2	0.1	0.7	1.0	0.9	1.1	1.4	4.0	5.2	22.1	23.5	יבוא	ארצות הברית	יבוא	505
649	Other Countries	2.2	1.2	3.0	1.6	9.3	16.6	1.5	6.7	15.7	14.9	51.0	25.2	יבוא	ארצות הברית	יבוא	505
	South America	48.0	158.1	109.2	344.4	1037.5	1129.3	87.4	152.2	189.0	365.7	1752.3	1174.5	יבוא	ארצות הברית	יבוא	505
711	Uruguay	9.6	7.3	14.8	18.4	80.3	68.6	1.2	0.5	2.4	1.9	19.3	8.3	יבוא	ארצות הברית	יבוא	505
713	Ecuador	0.5	0.1	1.4	1.4	4.5	3.5	2.1	5.1	5.9	9.0	41.3	31.7	יבוא	ארצות הברית	יבוא	505
715	Argentina	17.1	13.6	39.2	37.0	150.3	154.5	6.4	8.1	16.5	21.8	125.1	126.2	יבוא	ארצות הברית	יבוא	505
717	Bolivia	0.1	0.1	0.4	0.4	2.1	1.6	0.2	0.3	1.1	1.9	6.4	4.9	יבוא	ארצות הברית	יבוא	505
719	Brazil	15.0	31.2	40.3	67.6	297.2	270.7	48.0	96.0	93.9	240.5	1171.9	671.6	יבוא	ארצות הברית	יבוא	505
721	Venezuela	0.0	0.0	0.0	0.7	0.7	4.7	0.6	1.7	3.4	5.7	35.0	48.1	יבוא	ארצות הברית	יבוא	505
725	Paraguay	1.4	1.2	3.2	2.6	20.1	22.7	0.0	3.2	1.0	4.5	18.2	10.8	יבוא	ארצות הברית	יבוא	505
727	Peru	0.3	0.2	0.8	1.5	4.6	3.3	2.2	5.6	9.7	14.2	46.8	40.1	יבוא	ארצות הברית	יבוא	505
731	Chile	3.4	3.4	6.2	5.9	32.5	14.9	4.9	9.0	15.4	26.3	119.9	78.2	יבוא	ארצות הברית	יבוא	505
733	Colombia	0.6	101.0	2.9	208.9	445.2	584.8	21.8	22.6	39.7	39.5	166.7	152.6	יבוא	ארצות הברית	יבוא	505
799	Other Countries	0.0	0.0	0.0	0.0	0.0	0.0	0.0	0.1	0.0	0.4	1.7	2.0	יבוא	ארצות הברית	יבוא	505
	Oceania	6.0	34.6	22.1	57.1	262.5	150.5	31.4	82.9	91.7	190.0	786.6	567.3	יבוא	ארצות הברית	יבוא	505
805	Australia	5.3	30.7	18.7	51.0	240.4	139.3	29.0	77.8	85.0	158.2	711.3	520.2	יבוא	ארצות הברית	יבוא	505
810	New Zealand	0.7	3.8	3.2	6.0	21.8	10.8	2.3	5.0	6.4	31.0	67.8	43.6	יבוא	ארצות הברית	יבוא	505
806	Papua New Guinea	0.0	0.0	0.0	0.0	0.0	0.0	0.1	0.0	0.1	0.3	0.6	1.6	יבוא	ארצות הברית	יבוא	505
807	Fiji	0.0	0.1	0.2	0.1	0.3	0.0	0.0	0.1	0.2	0.4	3.1	0.1	יבוא	ארצות הברית	יבוא	505
899	Other Countries	0.0	0.0	0.0	0.0	0.0	0.4	0.0	0.0	0.0	0.1	3.8	1.8	יבוא	ארצות הברית	יבוא	505
	Unclassified													יבוא	ארצות הברית	יבוא	505
900	Countries	482.3	1208.6	1274.4	2793.9	11057.4	7890.9	161.4	162.0	445.6	392.8	1813.8	2091.8	יבוא	ארצות הברית	יבוא	505

(1) Since July 1997 the data on trade with Hong-Kong should be added to the data on China.

(1) החל בחודש יולי 1997 יש ליצרף לנתונים על סין את נתוני הסחר עם הונג קונג.

Table D 2. - Trade Countries -Imports and Exports, excl. Diamonds

לוח ד 2. - ארצות הסחר - יבוא ויצוא, ללא יהלומים

Million \$		מיליוני דולרים																	
סמל Code	Countries	יבוא						יבוא						ארצות	סמל Code				
		III		I - III		2008		2007		III		I - III				2008		2007	
		2009	2008	2009	2008	2008	2007	2009	2008	2009	2008	2008	2007			2008	2007		
	Grand Total	3431.2	5146.3	9828.3	13958.6	55808.5	46587.0	2978.9	3952.2	7946.1	10290.4	41924.5	35673.4	סך כולל					
	Europe	1690.1	2194.2	4692.4	6053.8	24371.0	20883.0	1154.4	1682.4	3144.8	4463.1	16776.9	14574.9	אירופה					
	European Union	1296.8	1712.3	3596.8	4780.6	18843.3	16550.3	952.7	1387.5	2623.5	3737.2	13801.3	12297.4	האיחוד האירופי					
105	Austria	19.6	26.2	53.1	78.7	397.0	296.6	8.7	12.9	20.4	27.5	95.4	115.6	אוסטריה	105				
005	Italy	205.5	266.5	503.7	667.0	2534.6	2295.0	95.0	157.6	257.3	447.8	1597.4	1203.0	איטליה	005				
007	Ireland	25.9	28.0	111.0	109.5	415.1	368.1	8.3	8.4	25.4	23.0	99.9	118.9	אירלנד	007				
224	Estonia	0.1	0.2	0.3	0.8	4.1	3.6	0.5	1.5	1.9	3.8	13.7	16.6	אסטוניה	224				
215	Bulgaria	4.2	4.1	10.2	10.0	49.3	57.2	4.0	6.8	11.7	16.9	54.1	49.7	בולגריה	215				
010	Belgium	99.2	131.6	287.9	354.9	1371.1	1272.0	75.9	123.6	243.0	354.6	1201.6	996.4	בלגיה	010				
015	Germany	250.5	385.8	701.0	1021.7	3938.9	3481.7	123.8	196.6	351.2	509.3	1901.7	1862.6	גרמניה	015				
017	Denmark	14.8	18.1	46.4	53.5	215.1	185.6	26.6	15.1	43.2	35.1	164.5	107.3	דנמרק	017				
020	Netherlands	154.9	206.9	462.5	639.2	2465.3	2090.3	151.5	203.5	415.0	573.3	2031.0	1606.3	הולנד	020				
235	Hungary	20.3	29.7	52.8	64.3	288.7	195.6	13.7	11.3	44.6	35.8	174.0	116.2	הונגריה	235				
023	United Kingdom	121.5	149.3	312.0	422.8	1765.7	1758.4	106.9	190.6	315.1	489.8	1619.8	1624.0	הממלכה המאוחדת	023				
245	Greece	21.2	21.0	61.8	63.1	221.2	284.5	29.7	22.2	80.8	68.6	294.2	284.7	יוון	245				
025	Luxembourg	10.4	13.7	26.3	41.0	174.0	91.9	0.8	2.2	2.1	4.6	20.4	15.3	לוזמבורג	025				
233	Latvia	1.1	15.3	44.2	86.5	319.4	258.8	2.2	3.1	6.7	8.0	33.9	32.5	לטביה	233				
234	Lithuania	0.5	1.2	2.5	3.4	24.5	21.8	1.4	5.5	5.0	14.0	42.4	26.2	ליטא	234				
255	Malta	2.1	1.3	6.8	2.0	35.4	26.0	0.4	0.7	1.1	1.4	50.8	90.8	מלטה	255				
244	Slovenia	6.5	7.1	14.6	18.2	65.4	97.1	13.8	13.1	39.3	30.4	125.1	100.3	סלובניה	244				
272	Slovakia	5.5	6.0	13.1	10.7	49.4	17.2	1.7	2.8	4.4	5.6	28.5	18.5	סלובקיה	272				
260	Spain	76.5	87.7	200.7	238.0	958.9	811.9	80.3	96.6	184.3	281.1	1092.3	1079.2	ספרד	260				
265	Poland	14.1	13.9	42.3	36.4	152.8	127.7	16.5	22.1	52.5	58.8	284.9	236.6	פולין	265				
125	Portugal	9.7	11.8	23.4	41.9	114.2	126.2	9.8	8.9	23.7	31.2	98.9	90.9	פורטוגל	125				
130	Finland	29.2	19.6	72.0	82.8	370.2	339.5	8.1	20.5	27.7	45.6	167.7	154.1	פינלנד	130				
271	Czech Republic	13.6	16.2	29.8	42.4	165.6	136.3	8.6	13.5	35.6	39.4	158.8	132.1	צ'כיה	271				
030	France	132.5	169.6	362.1	449.9	1882.0	1479.7	103.9	125.0	259.8	318.0	1162.6	1202.3	צרפת	030				
378	Cyprus	4.1	8.9	11.9	33.2	68.0	65.1	33.3	88.0	102.3	216.1	879.4	621.3	קפריסין	378				
275	Romania	10.1	10.6	23.1	25.0	103.8	108.4	16.4	19.7	37.2	56.9	228.6	226.6	רומניה	275				
135	Sweden	43.2	62.0	121.3	183.7	693.6	554.1	10.9	15.7	32.2	40.6	179.7	169.4	שוודיה	135				
	European Free Trade Association (E.F.T.A.)	240.8	198.2	687.7	611.5	2903.6	2131.8	28.1	36.3	60.2	76.1	248.7	235.9	האיחוד האירופי לסחר חופשי (אפט"א)					
107	Iceland	0.9	1.6	2.2	3.1	17.7	13.3	0.6	0.4	0.8	1.1	3.5	4.9	איסלנד	107				
120	Norway	4.3	4.9	11.9	14.0	52.4	65.0	6.1	10.5	17.7	23.4	73.6	61.4	נורבגיה	120				
140	Switzerland	235.6	191.7	673.6	594.4	2833.5	2053.5	21.4	25.4	41.7	51.6	171.6	169.6	שווייץ	140				
	Other European Countries	152.5	283.7	407.9	661.7	2624.1	2200.9	173.6	258.6	461.1	649.8	2726.9	2041.6	יתר ארצות אירופה					
222	Ukraine	8.5	29.7	19.6	51.0	198.0	151.9	7.0	23.5	17.4	51.3	182.1	146.4	אוקראינה	222				
241	Bosnia and Herzegovina	0.1	0.1	0.1	0.2	1.5	2.1	0.1	0.4	0.7	0.7	4.2	1.6	בוסניה	241				
227	Belarus	0.3	0.2	0.6	0.8	5.6	5.2	1.8	3.2	4.1	5.9	22.6	14.4	בלרוס	227				
230	Gibraltar	0.4	0.9	0.9	1.8	2.7	1.1	0.0	0.1	0.0	0.3	35.2	25.3	גיברלטר	230				
324	Turkey	130.3	201.7	345.2	496.9	1823.2	1605.2	110.3	149.7	265.3	365.8	1586.4	1167.8	טורקיה	324				
246	Yugoslavia	0.0	0.6	0.5	1.3	10.3	11.2	0.1	3.0	2.5	5.8	57.9	20.8	יוגוסלביה	246				
236	Moldova Republic	0.1	0.1	0.3	0.9	2.2	1.1	0.6	0.6	3.1	1.3	25.8	10.3	מולדובה	236				
243	Macedonia	0.0	0.0	0.2	0.0	0.8	0.4	4.6	1.2	7.3	1.8	20.8	5.9	מקדוניה	243				
242	Croatia	0.3	0.3	0.7	0.6	5.9	3.1	2.7	2.3	6.6	5.6	23.2	27.8	קרוואטיה	242				
229	Russian Federation	12.4	50.1	38.8	107.3	572.7	419.6	40.5	72.6	137.8	203.1	727.9	601.5	רוסיה	229				
299	Other Countries	0.1	0.0	1.0	0.9	1.2	0.0	5.9	2.0	16.3	8.2	40.8	19.8	יתר הארצות	299				
	Asia	709.1	928.0	2136.5	2858.7	11612.6	9653.8	464.7	592.9	1137.1	1529.2	6722.1	5334.5	אסיה					
221	Uzbekistan	0.2	0.2	0.2	0.6	2.7	2.0	0.6	3.0	1.4	6.3	23.1	25.6	אוזבקיסטן	221				
223	Azerbaijan	0.0	0.0	0.1	0.1	0.3	0.2	19.9	6.6	41.6	35.0	128.3	82.6	אזרבייג'ן	223				
303	Indonesia	7.0	9.3	21.1	47.3	293.4	89.3	0.8	1.1	1.8	3.9	15.8	17.6	אינדונזיה	303				
226	Armenia	0.0	0.0	0.0	0.2	0.4	0.6	0.1	0.2	0.1	0.7	9.6	4.3	ארמניה	226				
228	Georgia	0.1	0.1	0.5	0.4	2.0	2.3	3.9	10.9	12.6	33.6	132.0	54.1	גרוזיה	228				
315	India	52.7	54.8	129.3	156.2	673.6	558.5	132.1	79.0	263.9	213.9	1377.9	725.1	הודו	315				
318	Hong Kong	63.9	74.3	178.3	223.5	881.6	809.2	33.9	33.8	79.9	95.1	409.4	356.4	הונג קונג	318				
321	Vietnam	6.3	6.5	18.8	50.3	140.0	64.2	9.0	2.2	14.1	30.8	79.4	70.9	ויאטנם	321				
232	Turkmenistan	0.0	0.0	0.0	0.0	0.2	0.8	0.0	0.6	0.0	0.9	1.7	2.2	טורקמניסטן	232				
363	Taiwan	47.9	62.4	126.5	175.9	709.7	708.3	19.0	52.3	71.7	113.3	450.7	537.7	טייוון	363				
327	Japan	136.6	198.1	370.1	637.3	2210.2	1871.8	42.8	66.2	126.1	168.7	796.3	669.9	יפן	327				
328	Jordan	3.8	9.0	9.7	19.5	105.9	54.4	22.6	30.5	71.4	100.6	283.1	249.1	ירדן	328				
312	Mayanmar	0.0	0.2	0.0	0.2	0.6	0.8	0.3	0.0	1.8	0.5	1.3	1.3	מיאנמר	312				
336	Malaysia	8.2	7.4	20.3	23.4	100.6	63.6	2.3	2.3	3.2	12.5	30.2	70.4	מלזיה	336				
345	China	227.4	300.8	842.0	956.9	4235.3	3472.8	59.2	104.3	139.6	212.1	1100.9	869.5	סין	345				
350	Singapore	45.2	53.2	102.7	137.6	540.7	550.2	27.2	39.8	70.5	101.7	455.3	370.2	סינגפור	350				
369	Sri Lanka	0.4	0.9	1.1	2.1	7.9	10.3	1.8	6.3	6.1	9.0	24.8	24.8	סרי לנקה	369				
360	Philippines	5.5	7.8	18.6	20.2	86.7	85.0	5.9	15.3	20.5	38.3	150.9	204.2	פיליפינים	360				
372	South Korea	74.0	93.2	206.8	284.0	1102.9	945.1	61.8	107.2	154.8	265.0	809.3	730.0	קוריאה הדרומית	372				
237	Kazakhstan	0.0	2.6	0.0	2.7	3.4	3.3	2.0	3.1	8.2	11.0	158.5	99.6	קזחסטן	237				
387	Thailand	28.5	46.2	83.8	115.9	445.7	343.0	10.6	25.2	31.5	62.5	213.9	137.8	תאילנד	387				
399	Other Countries	1.4	1.0	6.6	4.4	68.8	18.1	8.9	3.0	16.3	13.8	69.7	31.2						

Table D 2. - Trade Countries -Imports and Exports, excl. Diamonds

לוח ד 2- ארצות הסחר - יבוא ויצוא, ללא יהלומים

Million \$														מיליוני דולרים	
ממל	Countries	יבוא						יצוא						ארצות	ממל
		III		I - III		2008	2007	III		I - III		2008	2007		
		2009	2008	2009	2008			2009	2008	2009	2008				
Code														Code	
	Africa	30.5	78.0	146.1	172.3	733.6	336.3	72.6	103.2	229.6	293.3	1342.5	1081.8	אפריקה	
401	Uganda	1.9	0.4	2.6	1.6	7.2	7.6	1.3	2.2	2.5	3.6	11.6	11.1	אוגנדה	401
410	Ethiopia	4.3	5.2	10.3	16.0	46.2	26.3	0.4	1.7	2.3	4.6	18.4	12.1	אתיופיה	410
412	Botswana	0.0	0.0	0.0	0.0	0.0	0.0	1.8	11.7	15.4	29.3	79.9	39.6	בוצואנה	412
416	Gabon	0.0	0.0	0.0	0.0	0.0	0.2	0.1	0.1	0.6	0.3	2.9	1.1	גבון	416
420	Ghana	0.1	0.1	0.3	0.4	2.0	3.4	16.5	1.7	33.7	5.7	33.6	21.9	גנה	420
482	Dem. Rep. of the Congo	0.0	0.0	0.0	0.0	0.0	0.0	0.0	0.0	0.0	0.0	0.2	0.4	דמ.רפ' של קונגו	482
428	South Africa	7.5	59.1	84.8	120.1	494.2	158.7	16.2	39.0	41.8	76.6	336.4	274.8	דרום אפריקה	428
496	Zimbabwe	0.0	0.0	0.0	0.0	0.0	0.5	0.2	0.6	0.2	0.6	2.0	2.5	זימבבווה	496
434	Zambia	0.0	0.0	0.0	0.2	1.6	0.8	0.2	0.2	0.5	0.4	1.6	1.8	זמביה	434
436	Cote d'Ivoire	0.3	0.2	2.1	1.3	8.9	5.0	1.0	0.9	2.4	2.7	9.2	7.9	חוף השנהב	436
442	Tanzania	0.5	0.3	1.5	1.5	6.2	7.1	0.4	1.0	1.8	3.1	21.2	15.1	טנזניה	442
454	Mauritius	0.2	0.0	0.2	0.3	0.8	1.6	0.3	2.8	0.6	3.4	9.9	8.6	מאוריטיוס	454
462	Egypt	14.0	10.0	36.7	24.4	132.4	94.3	10.5	15.8	28.8	39.8	139.0	153.6	מצרים	462
464	Morocco	0.4	0.3	0.8	0.9	3.9	2.7	4.2	1.3	5.5	3.1	20.6	16.6	מרוקו	464
468	Nigeria	0.0	0.0	0.4	0.0	1.4	0.2	5.2	7.3	44.1	43.9	304.1	205.1	ניגריה	468
429	Namibia	0.0	0.1	0.1	0.2	0.5	1.0	0.2	2.2	0.5	10.4	22.0	77.2	נמיביה	429
474	Senegal	0.1	0.1	0.2	0.3	0.7	0.6	0.0	0.3	0.4	1.0	8.7	7.1	סנגל	474
486	Congo	0.0	0.0	0.0	0.0	0.4	0.7	2.3	0.6	2.9	2.2	12.1	11.0	קונגו	486
488	Cameroon	0.0	0.0	0.0	0.1	0.5	0.2	1.7	0.5	8.2	2.4	18.1	8.9	קמרון	488
490	Kenya	1.2	1.8	4.6	3.3	23.5	22.0	5.3	5.0	16.9	14.3	115.0	97.3	קניה	490
492	Reunion	0.0	0.0	0.0	0.0	0.0	0.0	0.2	0.1	0.7	0.2	1.3	0.8	ראוניון	492
494	Rwanda	0.0	0.0	0.0	0.2	0.6	0.2	0.2	0.2	1.4	7.7	19.7	5.9	רוואנדה	494
499	Other Countries	0.0	0.4	1.5	1.5	2.6	3.2	4.4	8.0	18.4	38.0	155.0	101.4	יתר הארצות	499
	America	564.8	808.3	1650.3	2246.0	8760.9	8564.2	1105.4	1354.8	2930.7	3497.6	14723.7	12233.2	אמריקה	
	North America	511.0	646.7	1531.0	1894.5	7679.2	7412.3	1005.7	1182.3	2702.4	3075.9	12741.2	10883.8	אמריקה הצפונית	
505	USA	458.8	594.7	1413.8	1768.4	7067.3	6921.9	926.7	1086.2	2502.6	2815.7	11601.2	9967.7	ארצות הברית	505
723	Mexico	17.2	15.5	37.0	31.1	115.8	57.9	25.4	27.1	65.4	73.0	329.2	289.7	מקסיקו	723
510	Canada	35.0	36.5	80.2	95.0	496.1	432.5	53.6	69.0	134.4	187.2	810.8	626.4	קנדה	510
	Central America	5.8	3.5	10.3	8.0	47.1	33.5	12.3	20.4	40.2	56.7	235.2	181.0	אמריקה המרכזית	
611	El Salvador	0.0	0.0	0.0	0.0	0.3	0.5	0.1	0.3	0.3	3.1	12.7	8.3	אל-סלבדור	611
631	Bahamas	0.0	0.0	0.0	0.0	0.0	0.2	0.0	0.0	0.0	0.1	0.4	0.5	בהאמה, איי	631
621	Barbados	0.0	0.0	0.0	0.0	0.0	0.0	0.0	0.2	0.0	0.8	1.7	3.6	ברבדוס	621
625	Jamaica	0.0	0.0	0.0	0.0	0.0	0.1	0.3	1.4	0.8	2.7	14.4	12.6	ג'מייקה	625
613	Guatemala	0.2	0.1	1.6	0.3	2.7	3.4	2.2	2.6	4.7	7.4	31.3	26.5	גואטמלה	613
636	Haiti	0.0	0.0	0.0	0.0	0.0	0.0	0.1	0.3	0.5	1.4	3.7	5.9	האיטי	636
615	Honduras	0.1	0.1	0.1	0.1	0.7	0.5	0.7	2.1	1.4	5.0	29.8	12.4	הונדורס	615
627	Trinidad and Tabago	0.0	0.0	0.0	0.0	0.0	0.0	0.3	0.1	1.2	0.1	2.4	3.8	טרינידד וטובגו	627
650	Martinique	0.0	0.0	0.0	0.0	0.0	0.0	0.2	0.2	0.5	0.4	1.9	1.1	מרטניק	650
617	Nicaragua	0.0	0.0	0.1	0.0	0.0	0.0	0.4	1.4	0.6	2.1	5.3	4.8	ניקרגואה	617
641	Panama	2.5	1.7	4.4	4.8	31.1	8.9	2.5	0.7	3.9	2.9	15.5	17.5	פנמה	641
619	Costa Rica	0.7	0.2	1.0	0.5	2.0	2.4	2.9	3.0	6.6	10.6	43.0	35.3	קוסטה ריקה	619
639	Dominican Republic	0.1	0.2	0.1	0.7	1.0	0.9	1.1	1.4	4.0	5.2	22.1	23.5	רפובליקה דומיניקנית	639
649	Other Countries	2.2	1.2	3.0	1.6	9.3	16.6	1.5	6.7	15.7	14.9	51.0	25.2	יתר הארצות	649
	South America	48.0	158.1	109.0	343.5	1034.6	1118.4	87.4	152.1	188.1	365.0	1747.3	1168.4	אמריקה הדרומית	
711	Uruguay	9.6	7.3	14.8	18.4	80.3	68.6	1.2	0.5	2.4	1.9	19.3	8.3	אורוגוואי	711
713	Ecuador	0.5	0.1	1.4	1.4	4.5	3.5	2.1	5.1	5.9	9.0	41.3	31.7	אקוודור	713
715	Argentina	17.1	13.6	39.2	37.0	150.3	154.5	6.4	8.1	16.5	21.8	124.8	126.1	ארגנטינה	715
717	Bolivia	0.1	0.1	0.4	0.4	2.1	1.6	0.2	0.3	1.1	1.9	6.4	4.9	בוליביה	717
719	Brazil	15.0	31.2	40.1	66.7	294.3	263.4	48.0	96.0	93.5	240.1	1168.0	666.2	ברזיל	719
721	Venezuela	0.0	0.0	0.0	0.7	0.7	1.1	0.6	1.7	3.3	5.5	34.5	47.9	ונצואלה	721
725	Paraguay	1.4	1.2	3.2	2.6	20.1	22.7	0.0	3.2	1.0	4.5	18.2	10.8	פרגוואי	725
727	Peru	0.3	0.2	0.8	1.5	4.6	3.3	2.2	5.6	9.7	14.2	46.8	40.1	פרו	727
731	Chile	3.4	3.4	6.2	5.9	32.5	14.9	4.9	8.9	15.0	26.2	119.6	77.8	צ'ילה	731
733	Colombia	0.6	101.0	2.9	208.9	445.2	584.8	21.8	22.6	39.7	39.5	166.7	152.6	קולומביה	733
799	Other Countries	0.0	0.0	0.0	0.0	0.0	0.0	0.0	0.1	0.0	0.4	1.7	2.0	יתר הארצות	799
	Oceania	6.0	19.6	22.1	41.8	220.7	132.8	27.6	73.0	78.4	159.3	679.2	471.7	אוקיאניה	
805	Australia	5.3	15.7	18.7	35.7	198.6	121.6	25.3	68.1	72.1	128.0	606.2	427.0	אוסטרליה	805
810	New Zealand	0.7	3.8	3.2	6.0	21.8	10.8	2.2	4.8	6.0	30.5	65.5	41.2	ניו זילנד	810
806	Papua New Guinea	0.0	0.0	0.0	0.0	0.0	0.0	0.1	0.0	0.1	0.3	0.6	1.6	פפואה גינאה החדשה	806
807	Fiji	0.0	0.1	0.2	0.1	0.3	0.0	0.0	0.1	0.2	0.4	3.1	0.1	פיג'י	807
899	Other Countries	0.0	0.0	0.0	0.0	0.0	0.4	0.0	0.0	0.0	0.1	3.8	1.8	יתר הארצות	899
	Unclassified Countries	430.7	1118.2	1180.9	2586.0	10109.7	7016.9	154.2	145.9	425.5	347.9	1680.1	1977.3	ארצות בלתי מסווגות	900

(1) Since July 1997 the data on trade with Hong-Kong should be added to the data on China

(1) החל בחודש יולי 1997 יש לצרף לנתונים על סין את נתוני הסחר עם הונג קונג.

Table D 3. - Trade Countries,
by Countries and Country Group ⁽¹⁾

לוח ד 3. - ארצות הסחר,
לפי ארצות וקבוצת ארצות ⁽¹⁾

Million \$										מיליוני דולרים	
Imports					Exports						
יתר ארצות	אסיה	ארצות הברית	האיחוד האירופי	סך הכל	יתר ארצות	אסיה	ארצות הברית	האיחוד האירופי	סך הכל		
Other Countries	Asia	USA	European Union	Grand Total	Other Countries	Asia	USA	European Union	Grand Total		
Original data										נתונים מקוריים	
1,911.2	927.9	594.4	1,712.1	5,145.6	885.6	592.9	1,086.2	1,387.5	3,952.2	III	2008
1,470.4	943.0	591.0	1,646.5	4,650.8	898.7	445.5	858.3	1,229.3	3,431.8	IV	
1,848.6	927.5	576.2	1,531.2	4,883.5	869.1	585.0	915.9	1,223.1	3,593.1	V	
1,639.1	978.8	579.4	1,665.5	4,862.8	961.0	637.4	1,332.8	1,312.0	4,243.2	VI	
1,894.3	1,139.7	604.4	1,803.2	5,441.6	1,006.4	717.7	912.4	1,271.6	3,908.1	VII	
1,753.6	948.7	732.7	1,610.0	5,044.9	852.0	612.0	1,051.4	1,000.4	3,515.8	VIII	
1,568.6	1,034.8	565.0	1,430.4	4,598.8	849.8	618.3	952.9	1,188.9	3,609.9	IX	
1,496.9	972.4	534.7	1,374.7	4,378.7	641.8	486.7	810.0	836.8	2,775.3	X	
1,193.5	924.5	608.6	1,512.0	4,238.6	771.4	579.8	986.1	979.1	3,316.4	XI	
867.2	859.9	468.4	1,457.0	3,652.4	725.8	510.5	965.7	1,022.9	3,224.9	XII	
920.5	756.9	416.2	1,183.1	3,276.6	524.2	347.4	831.5	884.6	2,587.7	I	2009
793.5	670.5	490.2	1,116.4	3,070.5	523.9	325.0	744.4	786.2	2,379.5	II	
966.5	708.9	458.8	1,296.8	3,430.9	634.8	464.7	926.7	952.7	2,978.9	III	
Seasonally adjusted data										נתונים מנוכי עונתיות	
1,533.4	989.4	553.8	1,616.4		837.7	530.9	1,008.6	1,159.5		III	2008
1,611.5	976.5	616.7	1,686.4		830.1	498.1	938.2	1,193.4		IV	
1,578.2	893.7	575.1	1,521.1		829.7	591.4	964.6	1,097.3		V	
1,596.3	1,021.3	596.0	1,734.1		852.9	589.3	1,215.2	1,221.7		VI	
1,736.3	1,082.3	625.3	1,692.1		886.6	666.7	945.5	1,278.4		VII	
1,600.0	936.6	747.6	1,629.6		873.9	631.0	1,018.7	1,197.1		VIII	
1,616.0	1,032.2	583.8	1,575.7		841.6	561.8	880.3	1,262.1		IX	
1,445.4	1,030.7	580.0	1,450.9		718.7	580.3	981.9	983.4		X	
1,386.8	978.6	608.8	1,503.9		796.8	579.0	926.3	1,016.1		XI	
887.4	855.2	431.3	1,341.4		699.0	429.2	853.4	991.8		XII	
1,032.4	805.3	446.4	1,296.4		576.1	407.7	887.8	910.4		I	2009
932.1	708.0	506.9	1,191.1		585.2	378.1	883.9	808.8		II	
953.1	720.6	434.8	1,193.8		592.7	415.0	830.6	815.8		III	
Trend data - Million \$										נתוני מגמה - מיליוני דולרים	
1,539.2	977.6	587.1	1,626.3		814.2	533.9	953.1	1,183.1		III	2008
1,580.7	1,003.1	591.5	1,643.2		830.9	549.0	964.3	1,193.5		IV	
1,611.4	1,023.5	597.6	1,652.7		844.1	563.3	971.6	1,201.7		V	
1,626.5	1,036.0	603.7	1,651.9		851.2	574.3	975.1	1,204.5		VI	
1,619.1	1,038.1	606.3	1,638.0		848.7	578.8	974.2	1,197.6		VII	
1,583.2	1,027.9	601.8	1,609.2		834.0	573.7	968.4	1,177.4		VIII	
1,516.5	1,004.7	588.5	1,565.6		807.1	557.9	957.1	1,142.1		IX	
1,423.4	969.7	566.5	1,509.9		770.3	532.3	940.8	1,093.1		X	
1,314.4	926.1	538.7	1,446.5		727.8	500.0	920.5	1,035.7		XI	
1,203.1	878.8	509.4	1,381.5		684.8	465.8	898.5	976.7		XII	
1,104.2	833.7	483.1	1,321.6		646.8	434.6	877.0	923.3		I	2009
1,028.4	796.5	462.9	1,272.5		617.9	410.5	858.4	880.9		II	
981.5	770.9	450.4	1,237.5		600.1	395.3	845.1	852.6		III	
Trend data- Percent change ⁽²⁾										נתוני מגמה - אחוז השינוי ⁽²⁾	
2.7	2.6	0.7	1.0		2.1	2.8	1.2	0.9		IV	2008
1.9	2.0	1.0	0.6		1.6	2.6	0.8	0.7		V	
0.9	1.2	1.0	0.0		0.8	2.0	0.4	0.2		VI	
-0.5	0.2	0.4	-0.8		-0.3	0.8	-0.1	-0.6		VII	
-2.2	-1.0	-0.7	-1.8		-1.7	-0.9	-0.6	-1.7		VIII	
-4.2	-2.3	-2.2	-2.7		-3.2	-2.8	-1.2	-3.0		IX	
-6.1	-3.5	-3.7	-3.6		-4.6	-4.6	-1.7	-4.3		X	
-7.7	-4.5	-4.9	-4.2		-5.5	-6.1	-2.2	-5.3		XI	
-8.5	-5.1	-5.4	-4.5		-5.9	-6.8	-2.4	-5.7		XII	
-8.2	-5.1	-5.2	-4.3		-5.5	-6.7	-2.4	-5.5		I	2009
-6.9	-4.5	-4.2	-3.7		-4.5	-5.5	-2.1	-4.6		II	
-4.6	-3.2	-2.7	-2.8		-2.9	-3.7	-1.5	-3.2		III	

(1) Excl. aircraft, ships and diamonds.

(2) Percent change on previous period.

(1) ללא אניות, מטוסים ויהלומים.

(2) השינוי באחוזים, כל תקופה לעומת קודמתה.