



PRESS RELEASE

info@cbs.gov.il

<http://www.cbs.gov.il>

FAX. 02-6521340

Jerusalem,
June 15, 2010
154/2010

NUMBER OF JOB VACANCIES, MAY 2010

- A continues increase (from April 2010) in the number of job vacancies in the Business sector in June – 58.7 thousand vacancies opposed to 53.6 thousand vacancies in May.
- The average Job vacancy ratio (JVR) in Israel during the first quarter of 2010 was relatively high (2.0%) regarding most EU countries.
- In the months April – June 2010 the most common job vacancy was sales workers (technical and commerce sales representatives, shop and department store salespersons ect.) – over 6,000 job vacancies in various industries.

The Central Bureau of Statistics (CBS) began in May 2009 with a new monthly survey that collects monthly data about job vacancies in the private sector in the Israeli economy. The job vacancy survey was initiated by the CBS in course of the accession process to the OECD, as a part of the main economic indicators serving for diagnosis of current economic developments.

It should be noticed that no seasonal adjustment was carried out on the series as there is not enough data for estimating reliable festival, trading day and seasonal adjustment factors.

Without seasonal adjustment the data is characterized by a lot of fluctuation.

It is important to point out that the data from the month of May 2010 are based on an updated sample that includes new businesses that opened during the past year, reduction of businesses that closed and dealing with the dynamics of the businesses that were sampled in the past (differences in the number of employees and a change is the main activity of the businesses).

Survey population

The survey population includes the businesses in all of the economic activities excluding:

- Small businesses with less than five employees.

Written by Elana Dror

For explanations and clarifications regarding the contents of this Press Release, Please contact the Press Relations Unit, at 02-6527845

- Agriculture (ISIC-Code A).
- Administration (ISIC-Code J) includes public administration and local authorities.
- Pre-primary education institutions (kindergartens and child day-care activities), public primary and secondary education institutions. The population includes higher education institutions (post-secondary and academic institutions).
- Services for households by domestic personal (ISIC-Code N).

Main findings

The figures of June 2010 indicate a increase (from April 2010) in the number of job vacancies in the Business sector, opposed to May. The number of Job Vacancies in June was 58.7 thousand, opposed to 53.6 thousand job vacancies in May. The Job Vacancy Ratio (JVR) is now 2.7%. In addition there was an increase in the number of employees from the month of March

Table A. Employees, job vacancies, May 2009 - June 2010 (thousands)

	Total Number of Employees	Total number of job vacancies	Job vacancy ratio (percent)	Change from previous month (percent)
May (1)	2,022.4	38.7	1.9	
June	2,014.9	43.9	2.1	13.6
July	2,007.4	44.0	2.1	0.1
August	2,038.7	42.2	2.0	- 4.2
September	2,025.1	50.0	2.4	18.7
October	2,006.0	44.7	2.2	-10.7
November	2,025.9	40.7	2.0	- 9.0
December 2009	2,048.5	36.2	1.7	- 11.0
January 2010	2,047.5	40.5	1.9	11.8
February	2,037.2	44.2	2.1	9.4
March	2,063.7	41.9	2.0	- 5.4
April	2,064.1	49.4	2.3	17.9
May (2)	2,073.2	53.6	2.5	8.6
June (2)	2,110.0	58.7	2.7	9.4

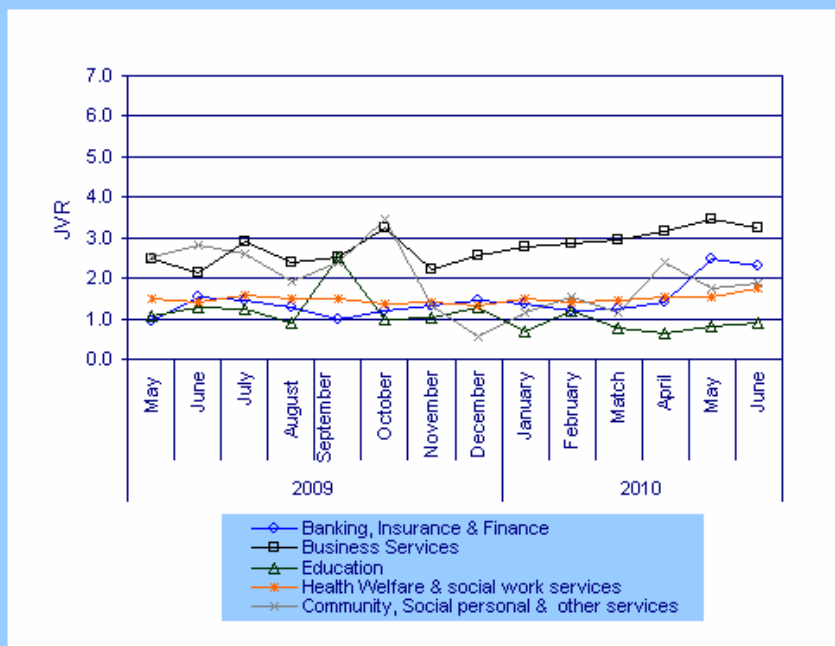
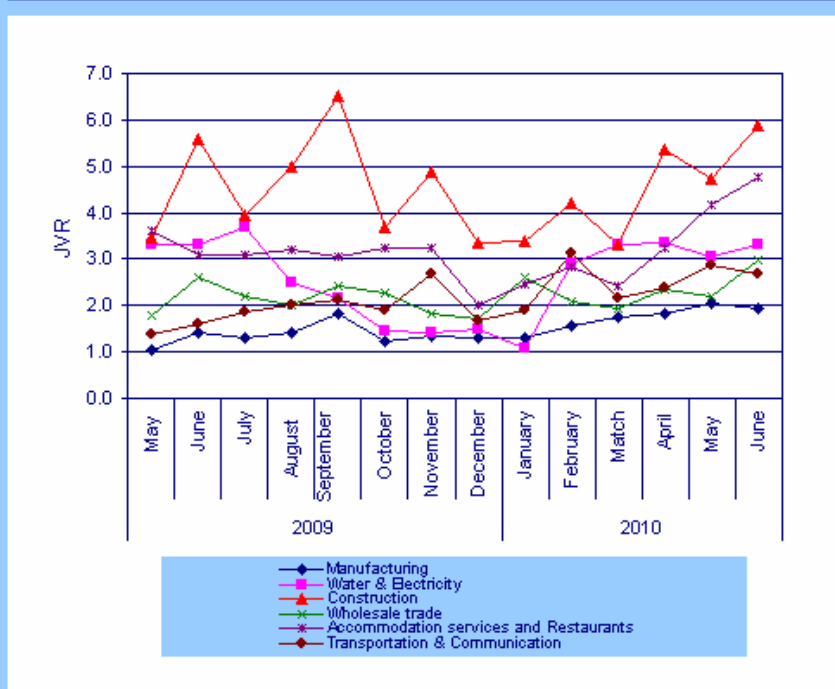
(1) In May, the first month of the job vacancy survey, the response rate was relatively low in comparison to the following months. Therefore it a bias in the estimate of job vacancies in this month is possible.

(2) Early estimate is subject to change in the following months.

Table B. Number of job vacancies by size of firm, May – June 2010 (thousands)

	Number of job vacancies – May	Number of job vacancies – June	Job vacancy ratio May - (percent)	Job vacancy ratio June - (percent)
Total	53.6	58.7	2.5	2.7
5-9 Employees	6.3	7.5	3.8	4.1
10-49 Employees	13.3	16.6	2.7	3.3
50-99 Employees	6.6	4.3	2.9	2.2
Over 100 Employees	27.4	30.3	2.3	2.6

Diagram 1. Job Vacancy Ratio by Economic Industry, May 2009 - June 2010



An increase in Job Vacancy Ratio was noticed in most economic activities.

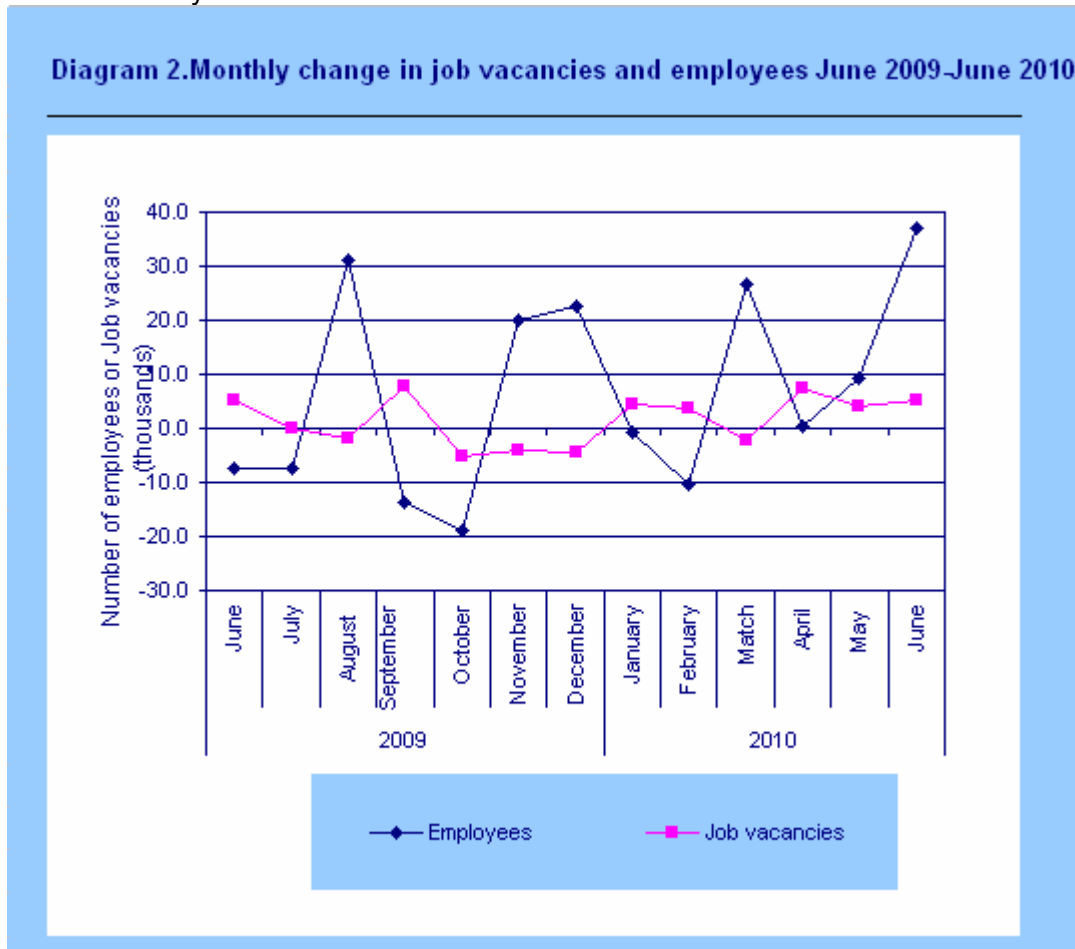


Diagram 2 shows a certain degree of substitution between the change in the number of employees and job vacancies, as it is a phenomenon, though the monthly changes exhibit a high volatility. In the past months there was an increase in the number of employees and the number of job vacancies that indicate a recovery in the business sector.

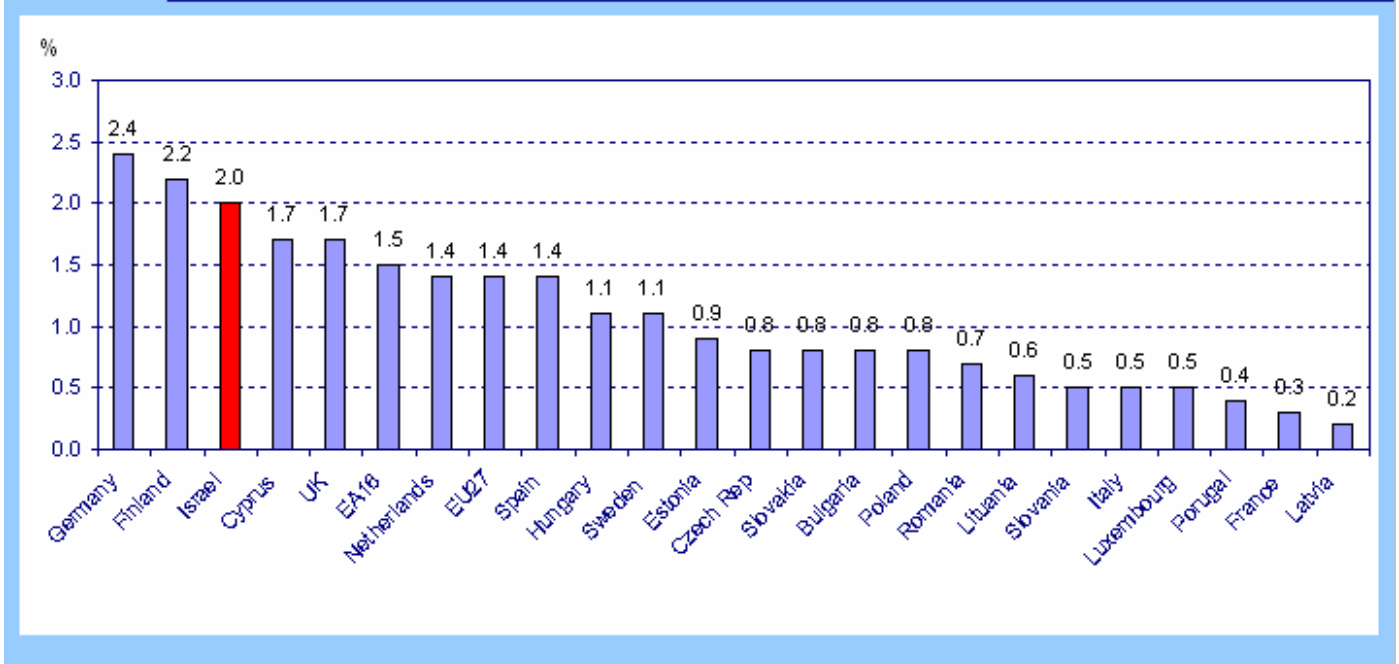
Job Vacancy Ratio (JVR), an international look, first quarter 2010

Recently the EU published the Job Vacancy Ratio (JVR) for the first quarter of 2010. With this information it is possible to compare Israel to the EU countries.

Israel's JVR in the first quarter of 2010 is relatively high (2.0%) regarding most of the EU countries (diagram 3). Only in two countries, Germany (2.4%) and Finland (2.2%) was the ratio higher than in Israel.

It should be noticed that no seasonal adjustment was carried on Israel and EU series.

Diagram 3. Job Vacancy Ratio, an International look Q1 2010



It is important to mention that the survey population is not identical in all the countries. In Israel it includes most of the business industries – see definitions, and in some of the EU countries the survey covers the public administration as well.

There are also differences in covering small enterprises: In Israel the survey includes enterprises with more than five employees. In France and Italy, for example, the survey population includes only enterprises with more than ten employees.

Table C. Number of job vacancies in the most popular occupations, February-April 2010

	Occupation	Occupation code	Number of job vacancies
1	Sales Workers	411+420	6,000
2	Waiters and bartenders And cooks	444+443	4,340
3	Engineers	(027+028+023+024+021)	3,070
	From: Computer Engineers	27	1,660
4	Computer technicians and programmers	130	2,440
5	Clerks (Customer service+ Office clerks)	361+372	2,230
6	Institution and home-based personal care workers	451	2,040
7	Watchpersons	930+463	1,960
8	Builders + Scaffolders	691+697	1,760
9	Kitchen workers and cleaners in offices and institutions	911	1,730
10	Bus and Truck drivers	844+843	1,340
11	Registered nurses	151	880
12	Stock Clerks	341	880
13	Electrical mechanics and fitters	641	690
14	Cashiers	321	660
15	Locksmiths	616	635
16	Bookkeepers	310	625
17	Athletes and related professionals (life-guards est.)	177	540
18	Welders and flame cutters	613	530
19	Unskilled construction workers	971	515
20	Systems analysts and related computer professionals	015	510

Definitions

Employed person - worked for at least one hour during the determinant month, at any type of work, for pay, profit or other remuneration (volunteers);

Job Vacancies - a job that is not currently occupied or that will be vacant soon, or a new job that has been created and is intended to be filled by workers outside the business, while the business is seeking actively for employees to fill it.

Job Vacancy Ratio – the ratio between the number of job vacancies and the complete employment volume, which is the sum of employed and job vacancies.

[Link to Job Vacancies Database](#) (see English)

Table 1. Number of job vacancies by Industry, May 2009 - June 2010 (thousands)

	שירותים קהילתיים חברתיים אישיים	שירותי בריאות רוחה וסעד	חינוך	שירותים (1) עסקיים	בנקאות, ביטוח ומוסדות פיננסיים	תחבורה ותקשורת	שירותי אירוח ואוכל	מסחר ס'טונאי	בינוי	חשמל ומים	תעשייה	סה"כ	
	Community, Social personal & other services	Health Welfare & social work services	Education	Business Services (1)	Banking, Insurance & Finance	Transportation & Communication	Accommodation services and Restaurants	Wholesale trade	Construction	Water & Electricity	Manufacturing	Total	
	M	L	K	I	H	G	F	E	D	C	B		ענף סדר
May (1)	(3)	4.2	(1.4)	8.6	0.8	2	5.1	5.3	(3.6)	0.6	4.1	38.7	מאי (1)
June	(3.6)	4.1	<1.7>	7.6	1.4	2.2	4.3	7.3	6	0.6	5.1	43.9	יוני
July	(3)	4.6	(1.6)	10.3	1.3	2.8	4.9	6.3	3.9	0.6	4.7	44.0	יולי
August	~	4.4	(1.2)	8.5	1.1	3	4.9	6.2	5.2	0.5	5.0	42.2	אוגוסט
September	(2.9)	4.6	2.8	10.1	1	3	4.5	7	7.2	0.4	6.6	50.0	ספטמבר
October	3.7	4	1.2	12	1.1	2.9	5	6.6	3.5	0.2	4.3	44.7	אוקטובר
November	<1.4>	4.2	1.3	7.6	1.2	4.1	4.7	5.5	5.3	0.3	5.1	40.7	נובמבר
December	(0.7)	3.9	1.7	9.6	1.3	2.4	2.8	5.0	3.6	0.3	4.8	36.2	דצמבר
January	<1.4>	4.5	1.0	10.0	1.3	3.0	3.8	7.6	3.3	0.2	4.5	40.5	ינואר
February	<1.7>	4.3	(1.6)	9.9	1.1	4.7	3.8	6.3	4.4	0.5	5.9	44.2	פברואר
March	(1.4)	4.4	1.1	10.9	1.2	3.1	3.6	5.7	3.6	0.6	6.3	41.9	מרץ
April	(2.9)	4.7	1.0	11.5	1.3	3.8	5.0	6.8	5.2	0.6	6.6	49.4	אפריל
May (2)	(2.0)	4.7	1.1	12.7	2.4	4.3	6.2	6.9	4.8	0.5	8.0	53.6	מאי (2)
June (2)	(2.4)	5.4	(1.3)	12.7	2.2	4	7	9.3	6.6	0.6	7.2	58.7	יוני (2)

(1) Manpower companies include only staff members

* Estimates with a relative sampling error between 25-40 percent are displayed in "()".

Estimates with a relative sampling error between 40 – 50 percent are displayed in "< >".

Estimates with a relative sampling error above 50% are not published and instead a ~ is marked

(1) ענף שרותי כוח אדם כולל את סגל החברות בלבד.

* אומדנים עם טעויות דגימה יחסיות בין 25% ל- 40% מוצגות בסוגרים "()".

אומדנים עם טעויות דגימה יחסיות בין 40% ל- 50% מוצגות בסוגרים "< >".

אומדנים עם טעויות דגימה יחסיות מעל 50% לא ניתנים לפרסום ובמקומם מצוין ~.